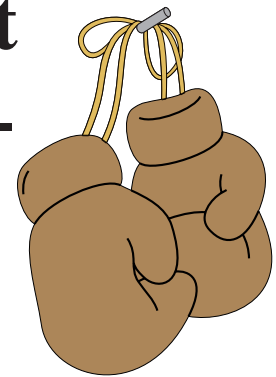


Colorado Scientific Society

*The objective of the Society is to promote
the knowledge and understanding of Earth science,
and its application to human needs*

Annual Student Night — Competition —



*Featuring knock-out talks by
our local students!!*



*Get off the sofa and support
our Rocky Mountain students!
Join us for an evening of
interesting talks!*

Note (yet another) Location Change!!

Wednesday (yes, Wed.!), November 18, 2009
Colorado School of Mines—Department of Geology and Geological Sciences,
Berthoud Hall, Room 241, Golden, CO
Social half-hour—6:30 p.m. Meeting time—7:00 p.m.

2009 Student Night

Each year the Colorado Scientific Society invites students from the regional schools to present talks at our Student Night. On this night, four students will present talks and receive cash prizes for their efforts. **The event will take place on Wednesday, November 18 at 7:00 PM at the Colorado School of Mines, Berthoud Hall, room 241, in Golden.**

To select the student presenters, we invite them to submit abstracts from which we select four speakers. Both graduate and undergraduate students are eligible. This is a good opportunity for students to give a talk before a knowledgeable but friendly audience and compete for a cash prize as well.

The four talks will be ranked on the basis of scientific merit and quality of the presentation by members of the Society and the following prizes will be awarded:

\$450 for first place
\$250 for second place
\$100 for third place
\$50 for fourth place



In addition, each of the speakers will receive free membership in the Society for 2010.

We look forward to seeing you on the 18th!!



December Meeting Tuesday, December 8, 2009

An early Christmas present!! Be sure to attend the annual CSS business meeting at Berthoud Hall on **Tuesday, Dec. 8th**. You will meet next year's officers and see them inducted into their new roles, see who won the best paper award for this year, thank Society volunteers and committee people, hear about the financial state of the Society, and listen to outgoing President Don Sweetkind give his "farewell" Presidential Address.

ADVENTURES IN NORTHERN COSTA RICA January 11–17, 2010

Join your affable guide, Dr. John Lufkin, former Professor of Geology at Colorado School of Mines, for a week of hiking, bird watching, geologizing, and site-seeing in the Guanacaste rainforest region of northern Costa Rica. You will stay at La Anita Rainforest Ranch, 1.5 hr drive NE of Liberia, for 6 nights in Costa Rica at a cost of \$1,900 (not incl. airfare). For further information, contact John Lufkin, Ph.D., Director, Lufkin Field Trips LLC. (303) 997-7365; lufk3@comcast.net; www.Johnlufkin.com





**An evening to honor
*Glenn Scott***

October 22, 2009



Remembrances

This month we recognize and honor two CSS members who passed away in the past few years, John D. (Jack) Edwards and Howard D. (Whitey) Zeller.

Sometimes we do not realize that CSS members, especially our older members, have passed away until the newsletters that we mail to them start being returned to us. Understandably, as members get older, they participate less and less in professional societies and we gradually have less contact with them. We offer our belated condolences to the families of these two men and recognize their contributions to the Colorado Scientific Society and the geologic profession.

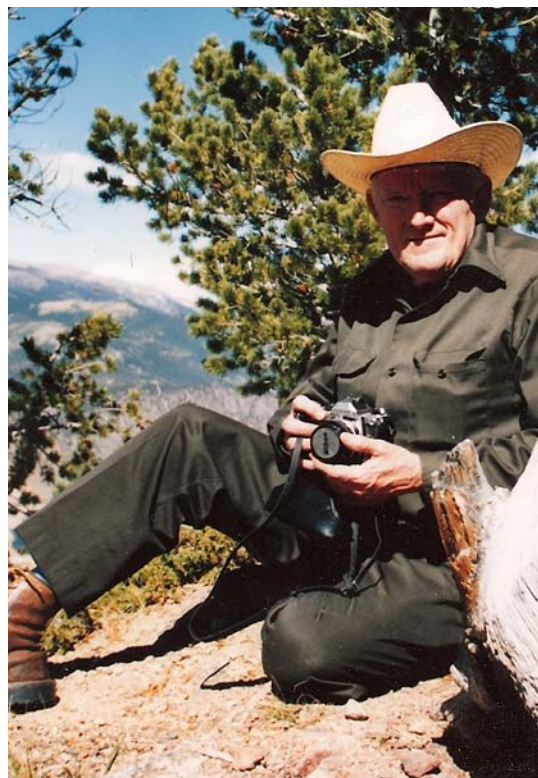


John D. (Jack) Edwards

Jack's career had two main phases: as a geologist at Shell Oil Company for 37 years, and as an adjunct professor at Ft. Lewis College and at the University of Colorado in Boulder. At Shell, Jack worked in 27 different offices from 1949 to 1987, working in many capacities, including Chief Geologist, and head of geologic training. In his last position, he served as Exploration Manager for South America, and participated in a major discovery in the Santos Basin. At the University of Colorado, Jack taught classes, served on 25 student thesis committees, and did extensive work on global energy forecasts of the 21st Century. Jack compiled and summarized the world's energy trends and made an effort to predict the future trends, based on current and past rates of consumption and demands. The results of this major work were included initially in the July 1997 AAPG Bulletin, which was updated in the 2001 AAPG Memoir 74. Dr. Jack Edwards, age 82, passed away on December 24, 2007, a few weeks after suffering a stroke.

Howard D. (Whitey) Zeller

Howard, a devoted husband, and loving "papa" to his kids and grandkids, served in the Navy in WWII in the Pacific arena, including the Battle of Iwo Jima; he retired military service as a Lieutenant (j.g.). Howard received his BA and MA in geology at Ohio State University (OSU), and was employed for 35 years by the U.S. Geological Survey (USGS); during his USGS tenure, he discovered two new uranium minerals: Zellerite, and Metazellerite. Howard "Whitey" D. Zeller, age 86, passed away on April 14, 2009.



It's Time to Pay Dues for 2010

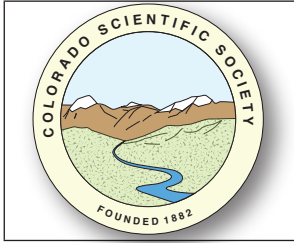
Membership dues for the coming year (2010) are now due. You will find a dues payment form in this issue of the newsletter; you can also download the form from the CSS website, <http://www.coloscisoc.org/membership/dues.html>. You will also see a reminder in the mail or email this month. Dues payments are \$20 for regular members; \$10 for corresponding members (outside the Colorado Front Range area), and \$5 for students. You may pay your dues by mailing a check to the CSS, or you can pay with a credit card using PayPal on the CSS web site. If you are uncertain of your member status or whether you owe dues, contact CSS Treasurer Don Sweetkind by phone at 303-236-1828 or by e-mail at dsweetkind@usgs.gov

As you pay your dues, please consider making an additional contribution to one of our Memorial Funds (which support our student research grants program) or the Endowment Fund (which we use to defray operating costs).

Please remember that your entire contribution goes towards generating interest for the grants and that your contribution is 100% tax deductible since the Society is a non-profit Section 501 (c)(3) organization. Any contributions made in calendar year 2009 (i.e., checks dated before Jan. 1, 2010) can be credited toward the 2009 tax year. Through interest income generated by our Memorial Funds, we have awarded over \$150,000 in research grant funding to over 200 students; this year we also supported the participation of about two dozen students on our field trips through the Pillmore Fund.

CSS Field Trip Hat Wars!!





DUES & FUNDS CONTRIBUTIONS COLORADO SCIENTIFIC SOCIETY

(Last Name) (First Name) (Initial) (current email address to receive newsletter and field trip notices)

DUES: Dues are for the calendar year (January-December)

Regular Members (\$20, CO Front Range) _____

Corresponding Members (\$10) _____

Student Members (\$5, enrolled in college) _____

MEMORIAL FUNDS: These funds support earth-science research grants to graduate students throughout the nation. If your contribution is not specified, it will be distributed equally among the funds:

(A) Ogden Tweto Memorial Fund _____

(B) Steven Oriel Memorial Fund _____

(C) Edwin Eckel Memorial Fund _____

(D) Bill Pierce-Heart Mountain Fund _____

(E) George Snyder Memorial Fund _____

(F) Chuck Pillmore Memorial Fund _____

This contribution is made in the memory of: _____

ENDOWMENT FUND: This fund is used to support the Society's monthly meetings and newsletter, field trips, family night, annual Emmons Lecture, and special activities.

TOTAL CONTRIBUTIONS (DUES AND FUNDS): _____

Please make your checks payable to the Colorado Scientific Society
Send this form & your check to:

**Colorado Scientific Society
P.O. Box 150495
Lakewood, CO 80215-0495**



Earth Science Meetings and Talks

Newsletter items must be received by the 25th of each month.



Colorado Scientific Society's regular meetings are held the 3rd Thursday of the month (maybe) at the Colorado School of Mines, Berthoud Hall (unless otherwise advertised). Social time begins at 6:30 p.m. and talks start at 7:00 p.m.

For more information, contact Don Sweetkind, at 303-236-1828, dsweetkind@usgs.gov

AIPG Nov. 17, James L. Jehn & Gina L. Burke, Jehn Water Consultants, Inc., Denver, "*Liquid Gold from the Hock Hocking Mine.*" 11:30–1:30 p.m., Petroleum Club, 3rd Floor of Denver Athletic Club, 1325 Glenarm St., Denver, Reservations: Jim Russell by noon on Nov. 13 303-278-4456 (home) or summitdatasvcs@msn.com, \$25 in advance, \$30 at the door.

Café Scientifique Nov. 17, Mitch Begelman, Prof. of Astrophysical & Planetary Sciences, JILA Fellow, Univ. of CO, Boulder, "*Gravity's Fatal Attraction: How black holes rule the universe.*" Wynkoop Brewery, evening science talks at 6:30. Free, except for beer. <http://www.cafescicolorado.org>

CSM Opaque Mineralogy & Microscopy Of Ore Deposits short course, Dec. 14–18, 9 a.m.–5 p.m. Use of reflecting microscope, ID of 50 common ore minerals, study of ore mineral suites. All participants receive soon-to-be-published book, 270 pages in length. \$995. Taught by Dr. John Lufkin, 303-997-7365, lufk3@comcast.net.

Colorado School of Mines, Van Tuyl Lectures Thursdays from 4–5 p.m. in Berthoud Hall room 241. **Nov. 12**, David Noe, CSM, Ph.D. (2006)–Colorado Geological Survey, "*New Discoveries: Examples from Colorado's Geologic Mapping Program.*" **Nov. 19**, Dean M. Peterson, Sr. Vice President-Exploration, Duluth Metals Limited, "*The Nokomis Cu-Ni-PGE deposit, Minnesota.*" **Dec. 10**, Jim Burnell, Colorado Geological Survey, "*Critical and Strategic Minerals in the 21st Century.*" (Rescheduled from Oct 29) <http://www.mines.edu/academic/geology>

Denver Mining Club meets every Monday at the Littleton Country Buffet near Bowles and Wadsworth (8100 W. Crestline Ave., in the shopping center) 11:30–1:00. Purchase of lunch required. **Nov. 16**, Larry Cerrillo, Ingenuity Enterprises Intl., Inc., "*Getting Past Go—You Have All the Necessary Permits, but Can You Proceed?*" **Nov. 23**, Bernhard Koch, Lakewood Exploration, "*Global Gold—Local Effects.*" Nov. 30, Jim Burnell, Colorado Geological Survey. "*Annual Summary of Colorado Mining and Mineral Activity.*" <http://www.denverminingclub.org>

Denver Museum of Nature and Science Nov. 15, 4:00 p.m., "*Meet Charles Darwin.*" Ricketson Auditorium. \$15 member, \$18 non-member. <http://www.dmns.org/main/en/General/Education/AdultProgram/Lectures>

Denver Region Exploration Geologists' Society (DREGS) meets in the Mutual Consolidated Water Building, 12700 West 27th Avenue, Lakewood. Social 6:00–7:00 p.m. Presentation at 7:00 p.m. Meetings are normally scheduled for the first Monday of each month. For information contact Jim Piper, (303) 932-0137, or the website <http://www.dregs.org>

Denver Well Logging Society (DWLS) <http://dwls.spwla.org> **Nov. 17**, Phil Nelson, USGS, "*Sonic velocity and other petrophysical properties of source rocks of Cody, Mowry, Shell Creek, and Thermopolis Shales, Bighorn Basin, Wyoming.*" Lunch & technical talk at Wynkoop Brewery, Mercantile Rm., begins at 11:20 a.m., 18th and Wynkoop Sts. in Denver. \$20 with reservations. To make reservation NLT Thurs. prior to meeting, go to http://dwls.spwla.org/Luncheon_Reservation.htm

Friends of Dinosaur Ridge <http://www.dinoridge.org>. Admission is free. Visitor Center (303) 697-3466

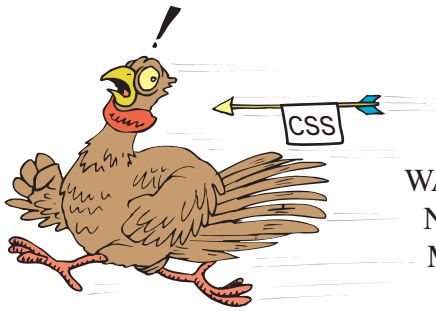
Rocky Mountain Association of Geologists (RMAG) Nov. 20, Richard Inden and Bill Pearson, "*The use of detailed aeromagnetic and gravity data for exploration.*" Reception at 11:30, lunch at noon, talk at 12:30. Reservations by recording at 303-623-5396 until 10:30 a.m., prior Wed. Luncheon \$30. Talk only (no res.)—\$5. Location: Marriott City Center Hotel, 1701 California St., Denver. <http://www.rmag.org/events>. **Nov. 21**, Rockbuster's Ball & Annual Professional Awards Banquet, Columbine Country Club, Littleton, online registration at: <http://www.eventbrite.com/org/4374408?s=1394245>

Rocky Mountain SEPM Nov. 24, Mark A. Kirschbaum, USGS, "*Stratigraphy, Age, and Hydrocarbon Potential of the Frontier Formation, Bighorn Basin, Wyoming.*" Reception at 11:30, lunch at noon, speaker at 12:30. Reservations: luncheons@rmssepm.org, before noon of preceding Friday. \$20.00 lunch, \$3 talk only. Wynkoop Brewing Company, 1634 18th St., Denver. <http://www.rmssepm.org/NewFiles/lunch.html>

Univ. of Colorado, Boulder, Geol. Sciences Colloquium Nov. 11, Matt Fouch Arizona State University, "*Hotsheds and Cool Drips: New Views of Western United States Crust and Mantle Dynamics*"; **Nov. 18**, Steve Martel, Univ. of Hawaii, "*Formation of Sheeting Joints: A New View*"; **Dec. 2**, Cin-Ty Lee, Rice University, "*What can basalts tell us about the temperature and composition of the mantle with implications for tectonics?*" Weds., 4:00 p.m., Benson Earth Sciences Auditorium (180), Refreshments at 3:30 p.m. on the 3rd floor (380). <http://www.colorado.edu/GeolSci>

Colorado Scientific Society
P.O. Box 150495
Lakewood, CO 80215-0495

<http://www.coloscisoc.org>



WANTED:
New CSS
Members

OFFICERS

President:	Don Sweetkind, USGS, 303-236-1828, dsweetkind@usgs.gov	2006–2009: Scott Minor, 303–236–0303, sminor@usgs.gov
President-Elect:	Scott Minor, USGS, 303-236-0303, sminor@usgs.gov	2007–2010: Jeremy McCreary 303–744–0907 jeremy@cliffshade.com
Treasurer:	Don Sweetkind, USGS, 303-236-1828, dsweetkind@usgs.gov	2008–2011: Lee Shropshire, UNC, 970–352–8778, leeshrop@comcast.net ;
Secretary:	Lisa Fisher, CSM, 303-478-9427 (c), lfisher@mines.edu	Sue Ellen Hirschfeld, eqdoc@ix.netcom.com
Past President:	Matt Morgan, CGS, 303-866-2066 matt.morgan@state.co.us	2009–2012: Jim Burnell, CGS, 303–866–2611, jim.burnell@state.co.us

COUNCILORS

COMMITTEE CHAIRPERSONS

Best Paper Award:	Don Sweetkind, USGS, 303–236–1828, dsweetkind@usgs.gov
Database Manager:	Erik Oerter, CGS, erik.oerter@state.co.us
Field Trips:	Cal Ruleman, USGS, 303–236–7804, cruleman@usgs.gov ; Karl Kellogg, kkellogg@usgs.gov
Graphics:	Lisa Rukstales, USGS, 303–236–5547, lrukstales@usgs.gov
History:	Beth Simmons, cloverknoll@comcast.net
Membership:	Thom Fisher, Libby Prueher, TC Wait, Eric Nelson, Beth Simmons
Memorial Funds:	Matt Morgan, CGS, 303–866–2066 matt.morgan@state.co.us
Newsletter Editor:	Lisa Rukstales, USGS, 303–236–5547, lrukstales@usgs.gov
Outreach:	Sue Hirschfeld, 720–565–9302, eqdoc@ix.netcom.com
Pillmore Fund:	Lee Shropshire, UNC, 970–352–8778, leeshrop@comcast.net
Program:	Emmett Evanoff, 303-444-2644, emmettevanoff@earthlink.net , Libby Prueher, Christine Turner
Publicity:	Emily Taylor, 303–236–5050, emtaylor@usgs.gov
Science Fair:	Chuck Weisenberg, 303–238–8806, cweisnrbg@msn.com
Webmaster:	



** STOP! Do NOT recycle this until after the talk! Please help us with publicity by posting at least the front page of this Newsletter on a bulletin board. Thank you!