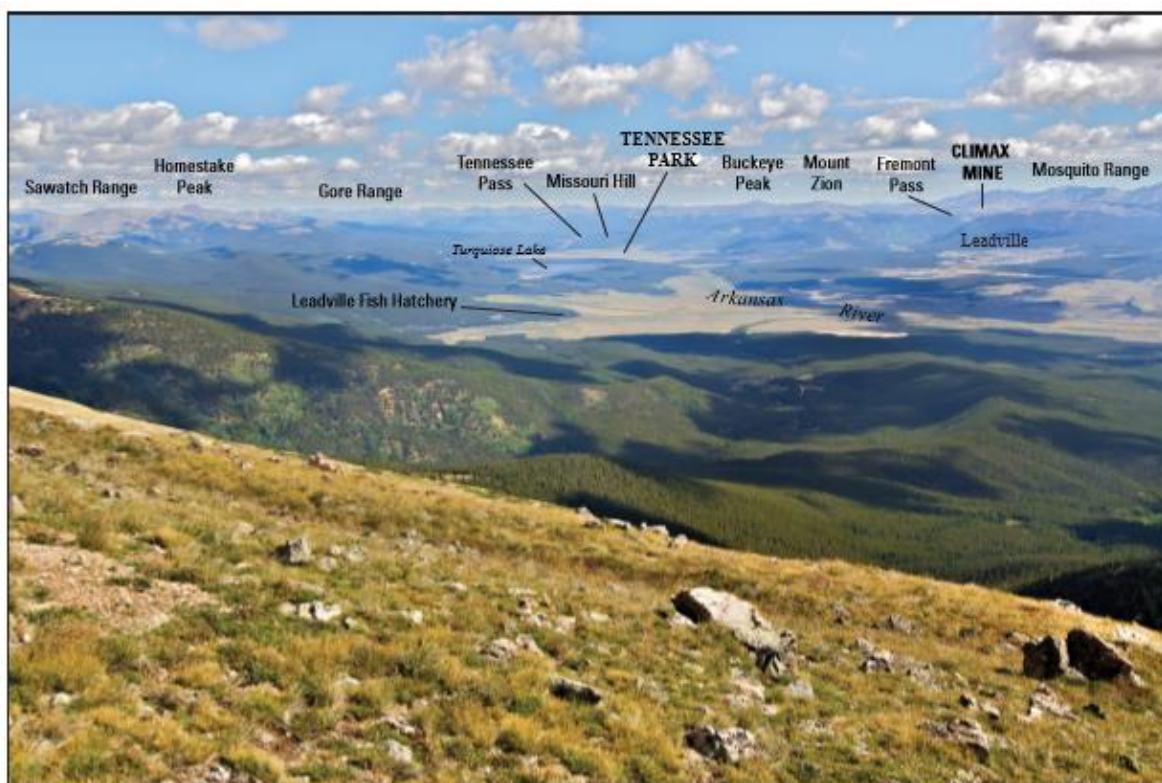


## UPPER ARKANSAS VALLEY FIELD TRIP

September 15 & 16, 2018

Karl Kellogg, Cal Ruleman, Scott Minor, Jonathan Caine, and others

USGS geologists

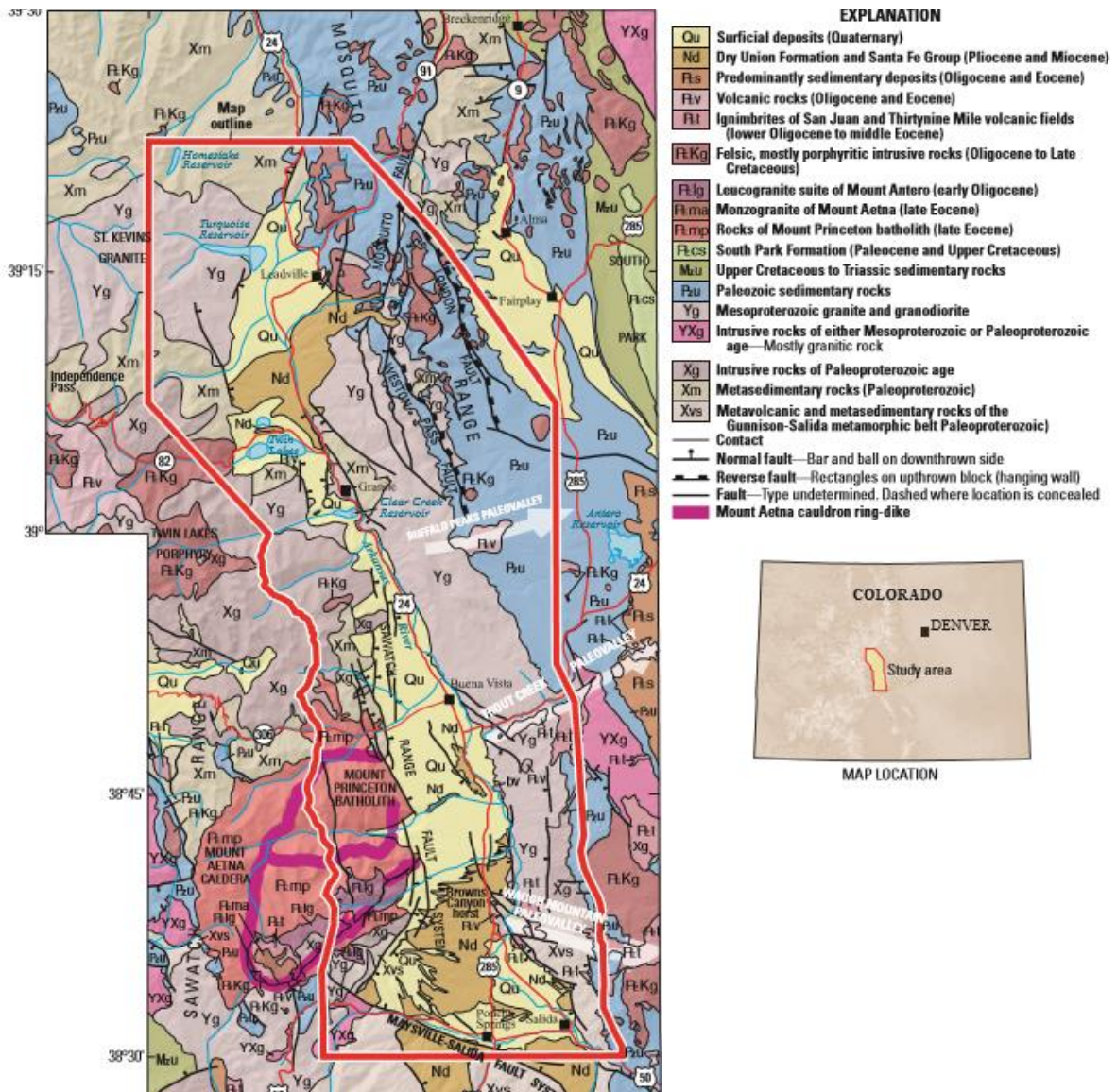


View to the northeast showing Leadville, Colo., from the flank of Mount Elbert and geographic features relative to the Leadville North, Colo., 7.5' quadrangle. Approximate location of the geologic map is shown by the dashed footprint.

### SPEND TWO DAYS EXAMINING DIVERSE GEOLOGIC FEATURES OF THE BEAUTIFUL UPPER ARKANSAS VALLEY:

- Proterozoic sedimentation, volcanism, and plutonism
- Laramide Orogeny structural features
- Northern Rio Grande Rift and Upper Arkansas Valley magmatism, tectonism, and sedimentation
- Pre-rift intrusive rocks and Oligocene and Eocene volcanic rocks
- Glacial history and deposits including catastrophic outwash floods
- Mineral deposits (gold, silver, copper, zinc, lead, fluorspar, and others)
- Landslide, alluvial, mass-movement, eolian, and wetland deposits

**THERE IS SOMETHING FOR EVERYONE!**



Regional structure map of the Upper Arkansas Valley

Kellogg, K.S., Shroba, R.R., Ruleman, C.A., Bohannon, R.G., McIntosh, W.C., Premo, W.R., Cosca, M.A., Moscatti, R.J., and Brandt, T.R., 2017, Geologic map of the upper Arkansas River valley region, north-central Colorado: U.S. Geological Survey Scientific Investigations Map 3382, pamphlet 70 p., 2 sheets, scale 1:50,000, <https://doi.org/10.3133/sim3382>.





View to the North from above Methodist Mountain and the northern Sangre de Cristo Mountains/Poncha Block of Minor and others (2018), showing major geographic and geologic features.