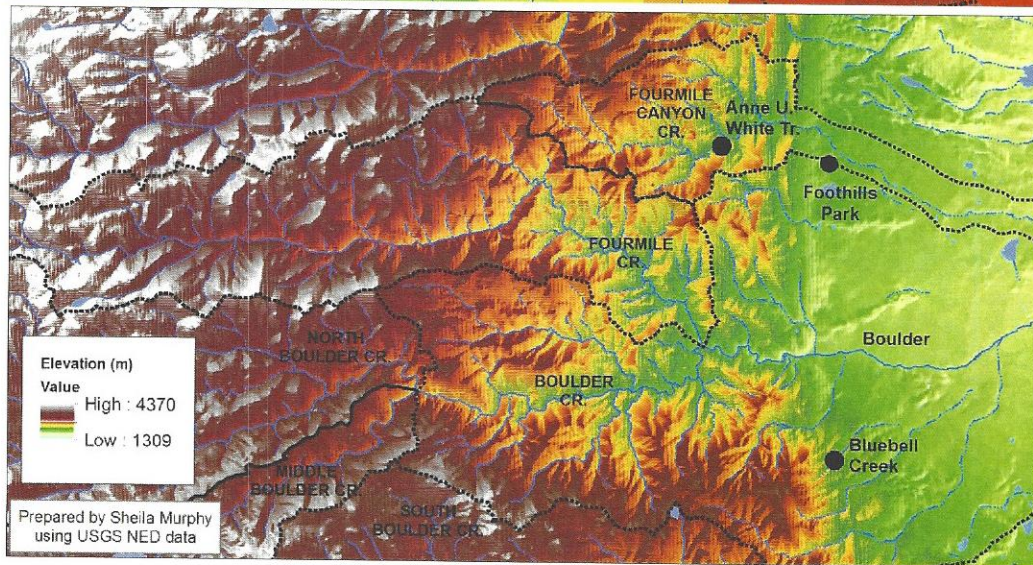
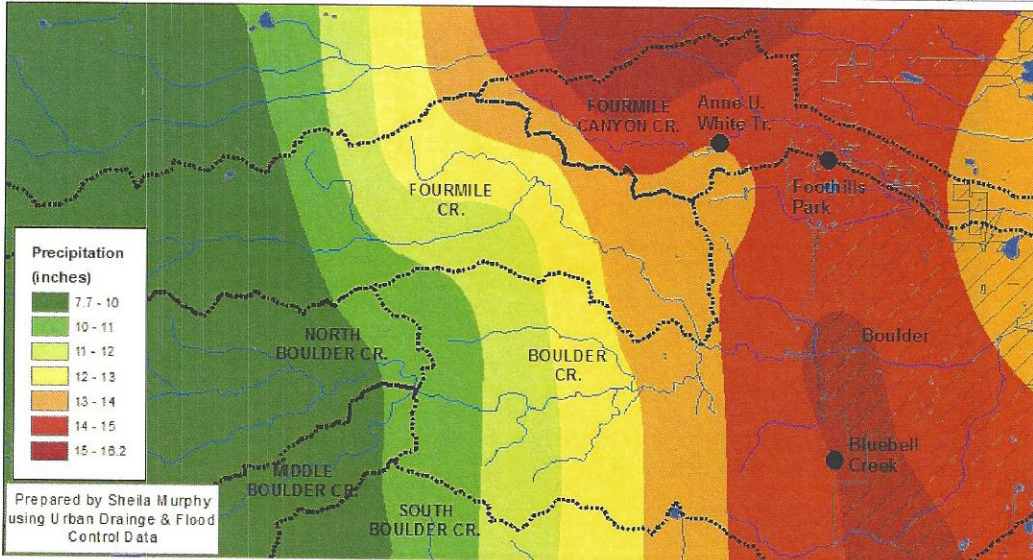
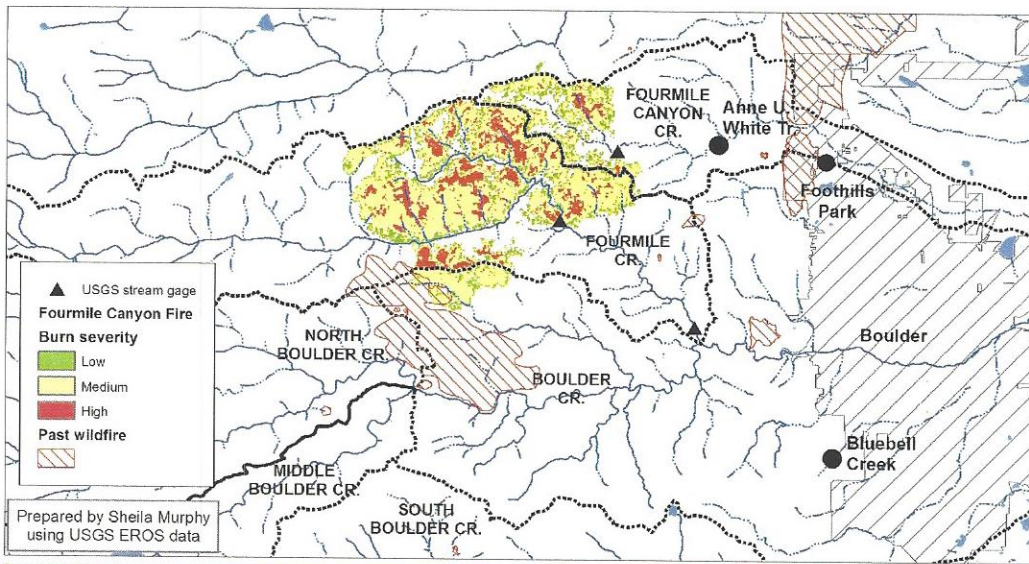
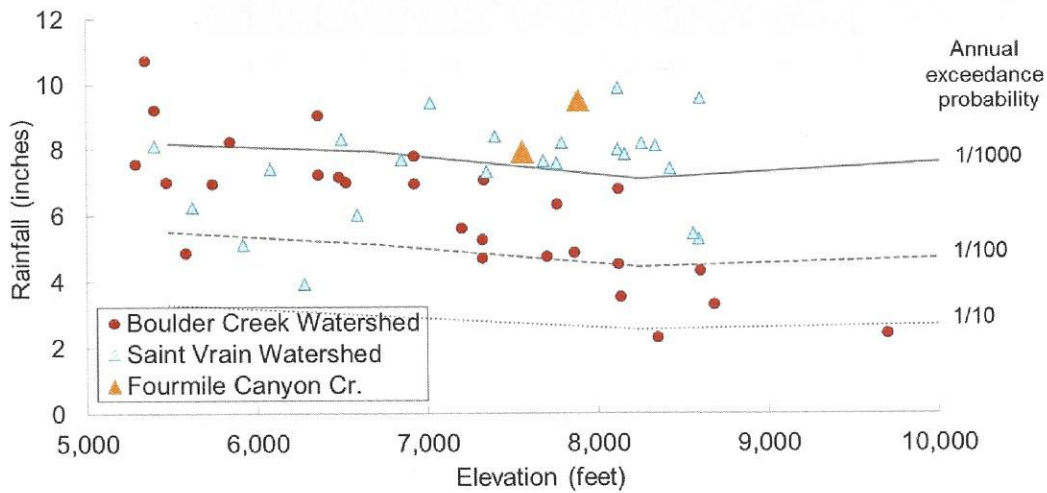
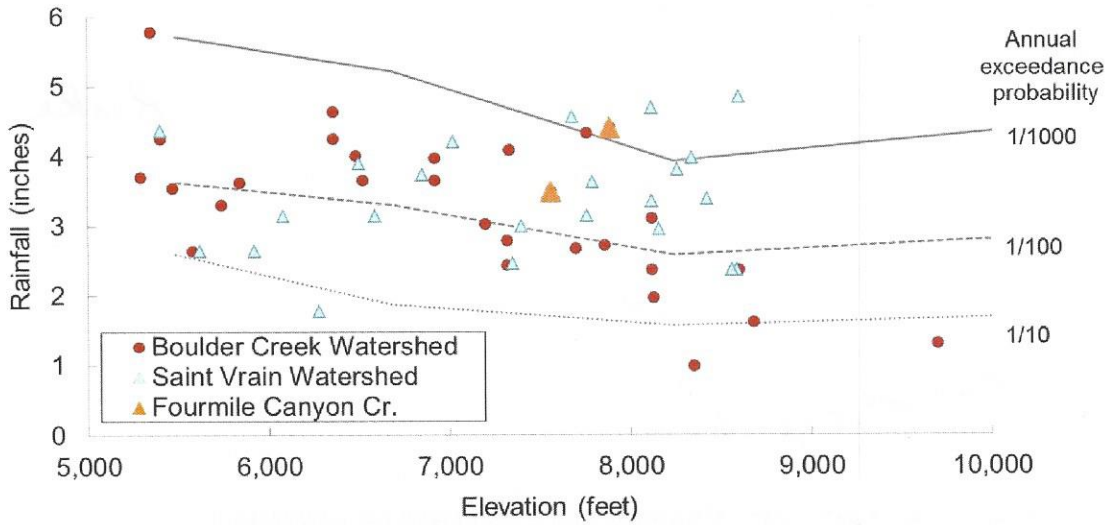
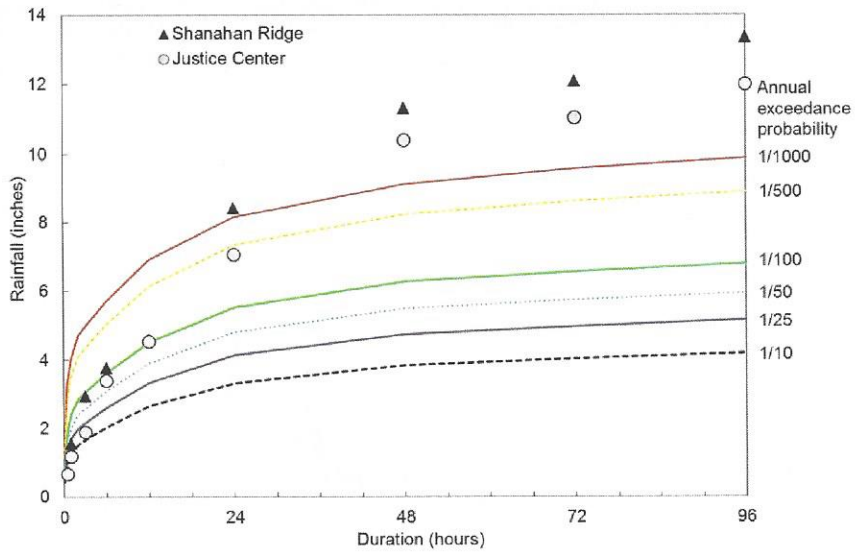


September 2013 precipitation, major watersheds, and counties in Colorado



## Factors that may have affected flooding in Fourmile Canyon Creek Watershed

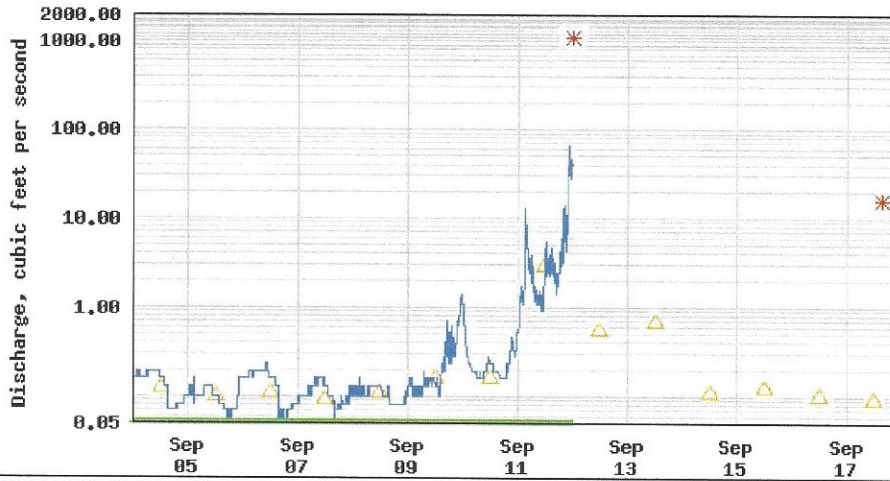
Rainfall in Boulder at varying durations and exceedance probabilities, September 9-17, 2013



6-hr (top) and 24-hr maximum rainfall totals and estimated exceedance probabilities in Boulder Creek and Saint Vrain Watersheds (rainfall from UDFCD, exceedance probabilities from NOAA)



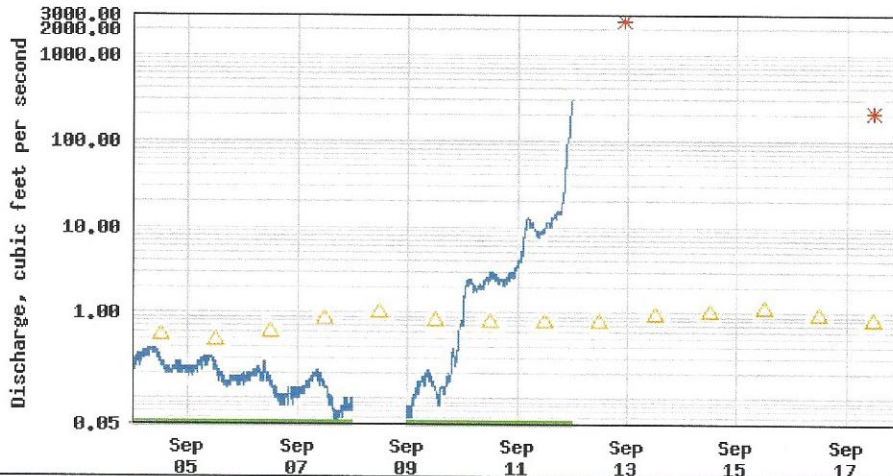
### USGS 06730160 FOURMILE CANYON CREEK NEAR SUNSHINE, CO



*Broke*



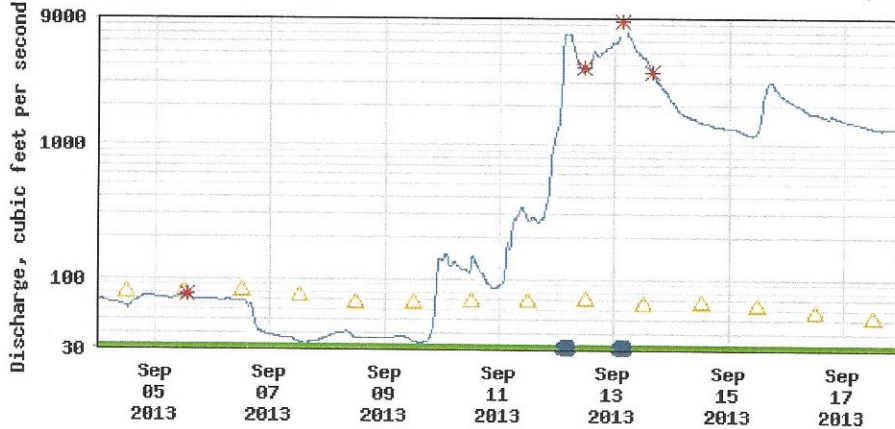
### USGS 06727500 FOURMILE CREEK AT ORODELL, CO



*Broke*



### USGS 06730200 BOULDER CREEK AT NORTH 75TH ST. NEAR BOULDER, CO



- △ Median daily statistic
- Discharge
- \* Measured discharge - or estimated Peak
- Period of approved data
- Value exceeds "very high" threshold.

*- or estimated Peak*